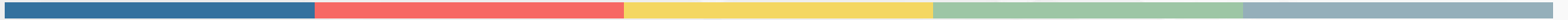


HUBISS

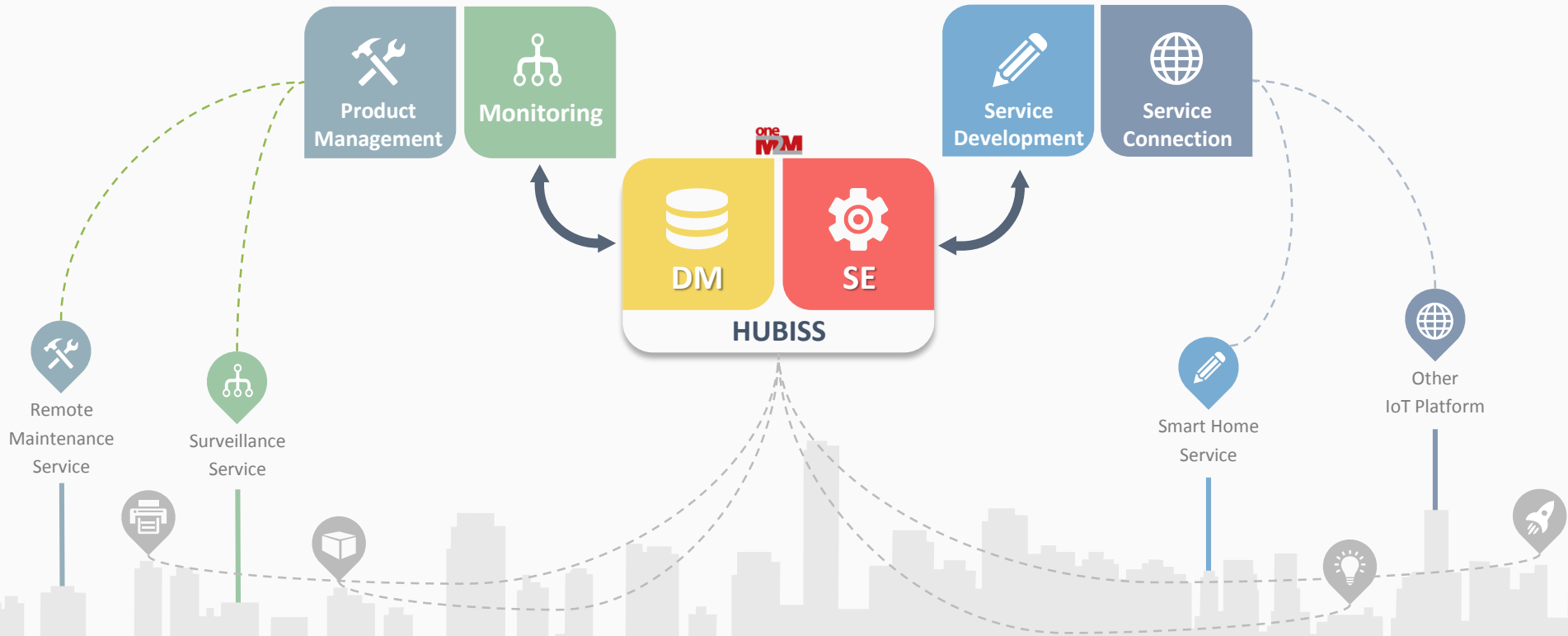
Herit IoT Solution – Connect, Manage, Enable



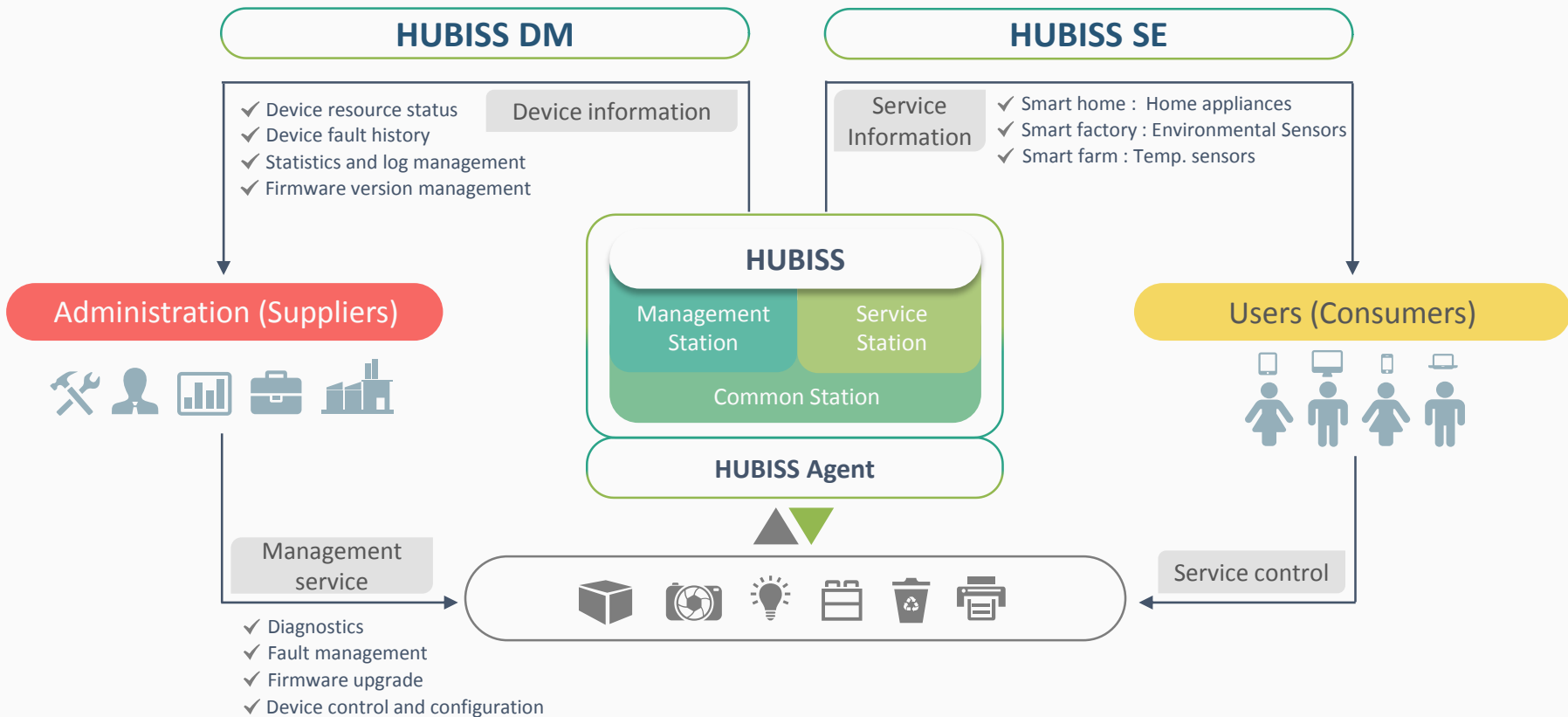
HERIT
CORPORATION

What HUBISS Do

A total solution for colorful IoT services and remote maintenance services



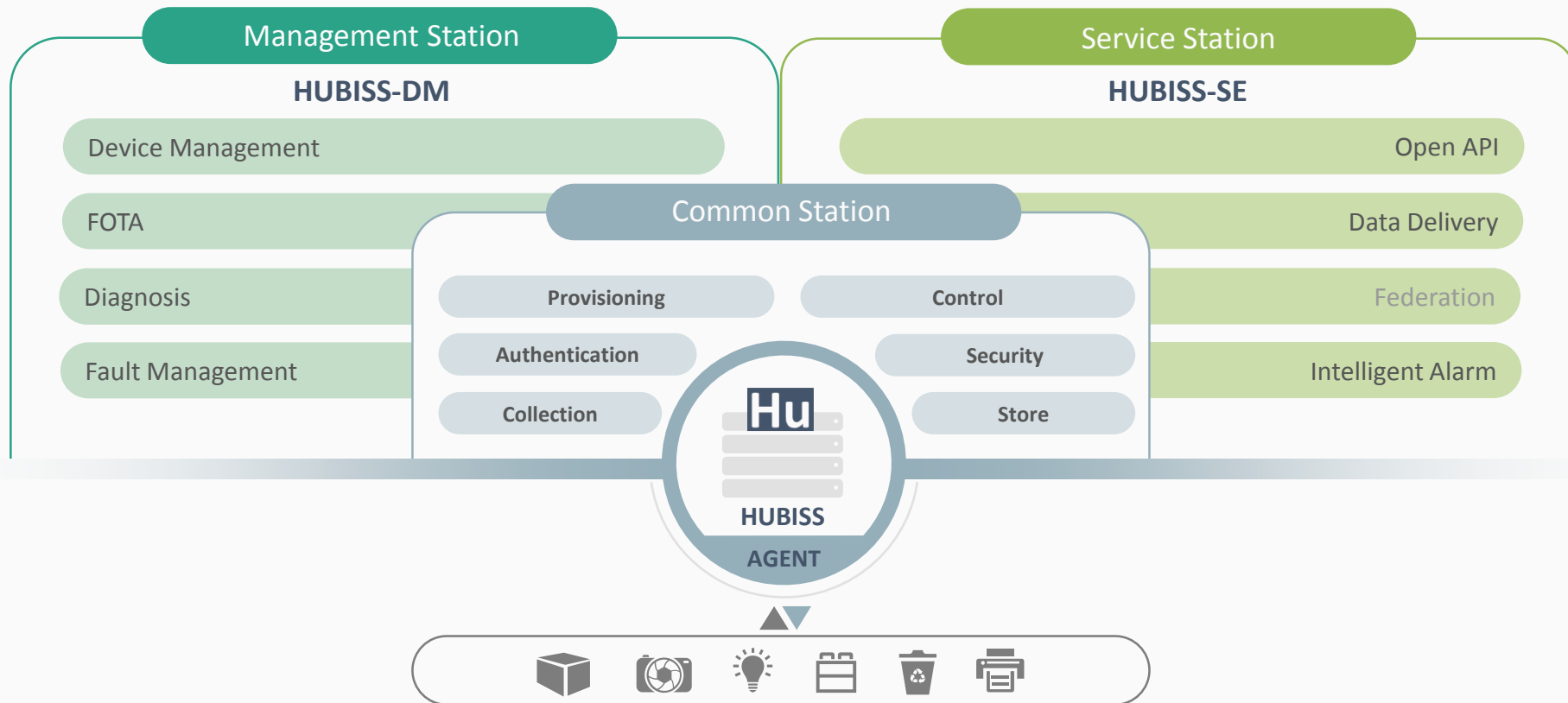
HUBISS Overview



HUBISS DM : HUBISS Device Management
HUBISS SE : HUBISS Service Enabler

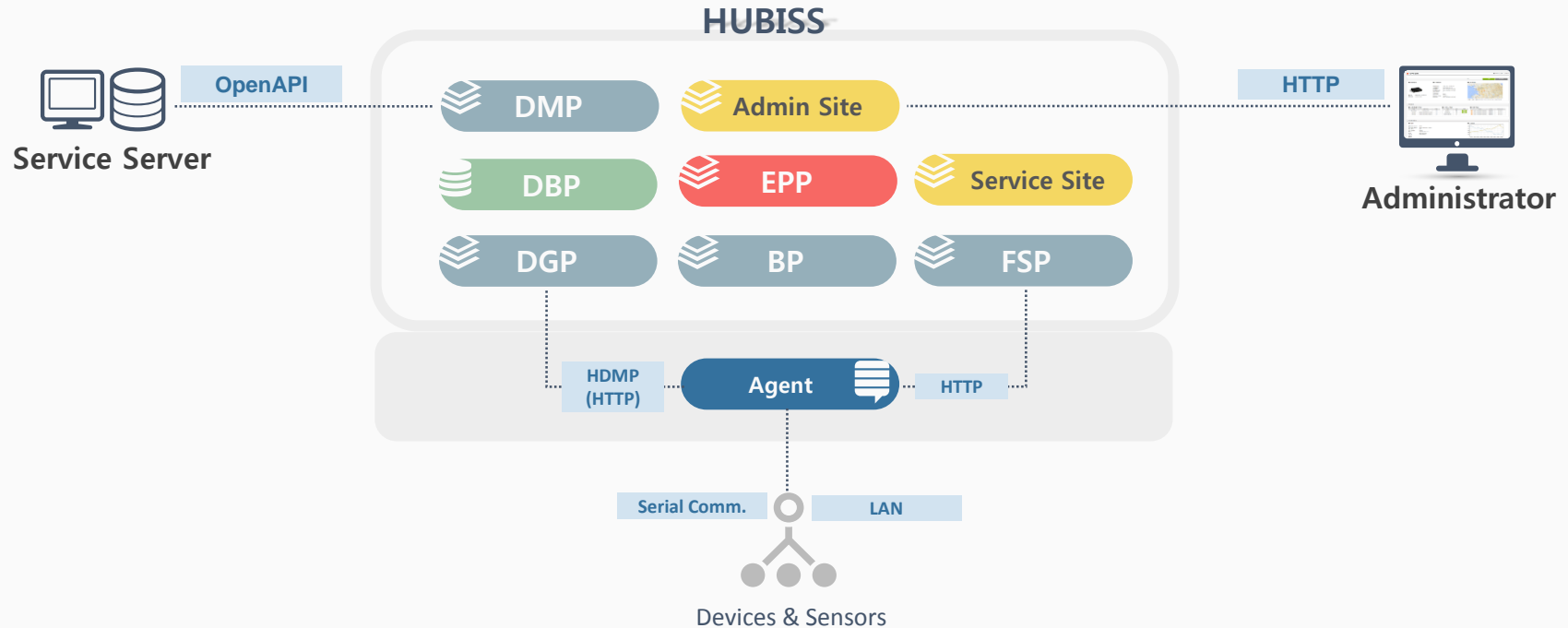
HUBISS Overview

HUBISS consists of AGENT for device connection, DM for device management server and SE for IoT service enabler server



HUBISS Features

Process block overview



- DMP : Device Management Process
- DBP : Database Process
- EPP : Event Processing Process
- DGP : Device Gateway Process
- BP : Batch Process
- FSP : File Server Process

HUBISS Features

Main function and features

01 Device Agent

Easy device connection by provided device Agent

Device information management function by connection to DM server, firmware download, and rule based event triggering function and its SDK for helping development of device application.

Support various client environment

Embedded Linux, Android, Windows
LTE modem, Open HW(Raspberry Pi, Beagle bone)

04 Authentication & Security

Device Authentication

Device authentication by ID and Password (Digest authentication available)
Auto receiving function of subscription information from connected subscription server

HTTPS based device security

AES-128 algorithm

02 Firmware Upgrade

FOTA Support

Firmware version management by devices
Firmware download and scheduling function by models
Monitoring FW upgrade status

05 Flexible MO

Flexible management object(MO) configuration

Accommodate various sensing and control information by index based URI type management information identification system, support topologies such as single/attached device/GW models

03 Auto provisioning

Profile based dynamic Configuration

Device and service policy and configuration by devices and its models
On/Off alarm auto alert function.

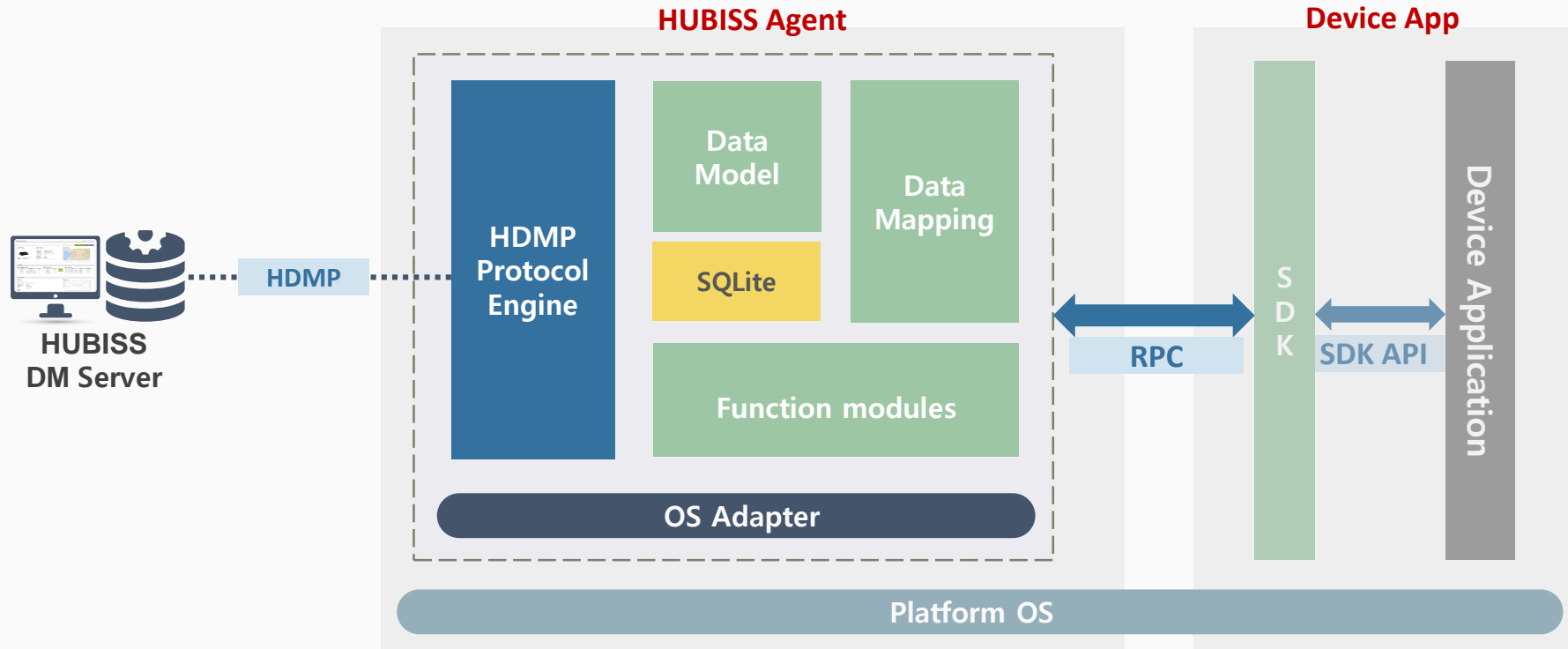
06 Remote diagnostics

Rapid maintenance of fault products

Email, SMS, Push alarm
Remote diagnostics and fault log analysis

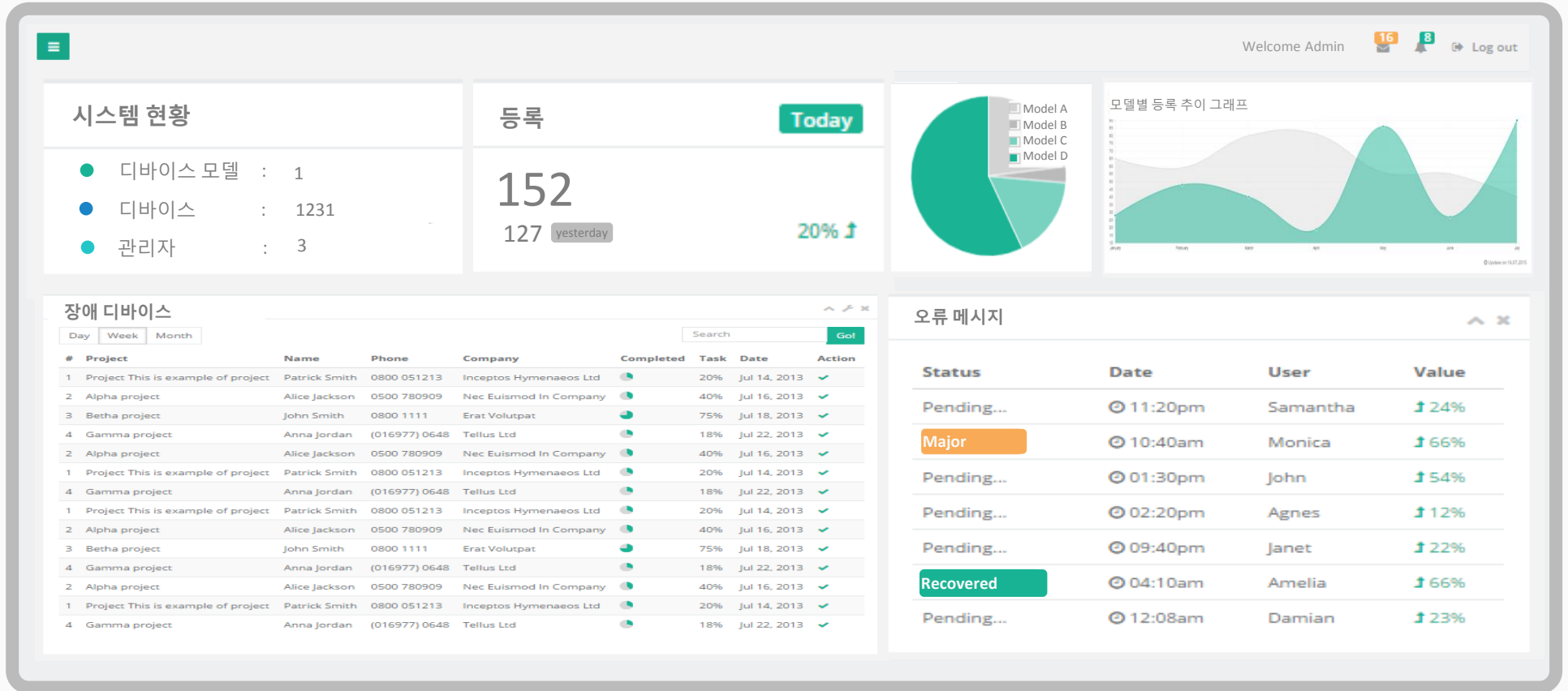
HUBISS Agent Overview

DM Client Block Diagram



HUBISS-DM Admin UI

Monitoring UI screen Shot



HUBISS-DM Admin UI

Device monitoring screen shot

The screenshot displays the HUBISS-DM Admin UI with the following components:

- Header:** "HDM" on the left, "Welcome to HIT DM Administrator!!" and "Log out" on the right.
- Model Information (모델정보):** Includes a device image and details: 제조사 (Herit.inc. 900000), 모델번호 (HIT_GW_01).
- Device Information (디바이스 정보):** 등록: 2015.02.10, SN: HG_00001_23423, FW: HERIT.GW V0.1_32.3432, 2015-02-11 23:34:23, and a "비전업" (Not in use) status.
- Status (상태):** MAJOR (red dot), GPS Module Failure, 2015-02-11 23:34:23, and a "진단" (Diagnosis) button.
- TODAY:** Summary cards for 알람 (217, +23%), 노티 (462, +23%), and 에러 (610, +23%).
- Map (지도):** A Google Map showing the device location in Seoul, South Korea.
- Temperature (온도):** 22 도 (degrees Celsius).
- Humidity (습도):** 45 %.
- Switch (스위치):** ON (with a toggle switch).
- Control (제어):** Reboot and Factory Reset buttons.
- Network (네트워크):** TX: 21 Kb, RX: 243 Kb, and a line graph showing network activity from 2006 to 2012.
- Log Collection (로그 수집):** A "보기" (View) button.
- Alerts (다중음선 항목):** Two empty sections for alert lists.
- Battery (배터리):** A "CMS" field and a "검색" (Search) button.



THANK YOU